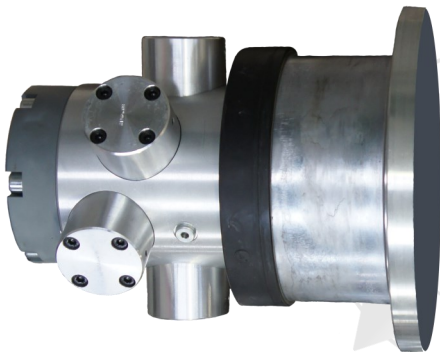


Bellhousings - Damping flanges - Couplings

PRODUCT DESCRIPTION:



BELLHOUSING WITHOUT DAMPING:

- * Connection elements for centring between electric motor and hydraulic Wimmer-pump
- * For all hydraulic Wimmer-pumps available at short notice
- * Both mounting sides are finished
- * Horizontal and vertical application possible
- * Material: aluminum



BELLHOUSING WITH DAMPING

- * Reduction of noise level of the pump / motor unit up to 10 dB (A) possible, depending on pump construction
- * Standard bellhousing made of aluminum, damping flange made of aluminum / perbunan vulcanised
- * No metallic connection
- * Horizontal and vertical application possible
- * Resistance: mineral oil max. 80°C
- * Damping flanges are applied in connection with bellhousings or pump brackets between hydraulic Wimmer-pumps and E-motors
- * They consist of two aluminium components, which are connected to each other by a moulded-on rubber coating (perbunan-NBR) without metallic contact

COUPLINGS



- * Torsionally flexible, maintenance free, good dynamic properties
- * Vibration reducing
- * Axially pluggable
- * Compact design / low flywheel effects
- * High performance elastomer hardnesses (98 shore A) of the spiders
- * Finish bores with keyway
- * Hub materials: cast iron, sintered steel or steel depending on size
- * Standard program

WIMMER Bellhousing & Couplings - 1500RPM

Pump		Electromotor				Assembly Belhousing + coupling	
Type	Ø shaft	KW (1500RPM)	Frame	Ø B5 flange	Ø shaft	WITHOUT damping	WITH damping
PPZ (BG1)	15	0,55 > 0,75	80K4/G4	200	19	WIMA101	WIMD101
		1,1 > 1,5	90S/L4		24	WIMA102	WIMD102
		2,2 > 4	100L4-112M4	250	28	WIMA103	WIMD103
		5,5 > 7,5	132S/M4	300	38	WIMA104	WIMD104
		11 > 15	160M/L4	350	42	WIMA105	WIMD105
PD / PDS (BG2)	18	0,55 > 0,75	80K4/G4	200	19	WIMA201	WIMD201
		1,1 > 1,5	90S/L4		24	WIMA202	WIMD202
		2,2 > 4	100L4-112M4	250	28	WIMA203	WIMD203
		5,5 > 7,5	132S/M4	300	38	WIMA204	WIMD204
		11 > 15	160M/L4	350	42	WIMA205	WIMD205
PZ (BG2)	20	1,1 > 1,5	90S/L4	200	24	WIMA301	WIMD301
		2,2 > 4	100L4-112M4	250	28	WIMA302	WIMD302
		5,5 > 7,5	132S/M4	300	38	WIMA303	WIMD303
		11 > 15	160M/L4	350	42	WIMA304	WIMD304
P / PS / PM (BG2)	32	2,2 > 4	100L4-112M4	250	28	WIMA401	WIMD401
		5,5 > 7,5	132S/M4	300	38	WIMA402	WIMD402
		11 > 15	160M/L4	350	42	WIMA403	WIMD403
		18,5 > 22	180M/L4		48	WIMA404	WIMD404
		30	200L4	400	55	WIMA405	WIMD405
PW (BG3)	40	11 > 15	160M/L4	350	42	WIMA501	WIMD501
		18,5 > 22	180M/L4		48	WIMA502	WIMD502
		30	200L4	400	55	WIMA503	WIMD503
		37 > 45	225S/M4	450	60	WIMA504	WIMD504
		55	250M4	550	65	WIMA505	WIMD505
		75 > 90	280S/M4		75	WIMA506	WIMD506

WIMMER Bellhousing & Couplings - 3000RPM

Pump		Electromotor 3000RPM				Assembly Belhousing + coupling	
Type	Ø shaft	KW (3000RPM)	Frame	Ø B5 flange	Ø shaft	WITHOUT damping	WITH damping
PPZ (BG1)	15	0,75 > 1,1	80K2/G2	200	19	WIMA101	WIMD101
		1,5 > 2,2	90S/L2		24	WIMA102	WIMD102
		3 > 4	100L2-112M2	250	28	WIMA103	WIMD103
		5,5 > 7,5	132S2	300	38	WIMA104	WIMD104
		11 > 18,5	160M/L2	350	42	WIMA105	WIMD105
PD / PDS (BG2)	18	0,75 > 1,1	80K2/G2	200	19	WIMA201	WIMD201
		1,5 > 2,2	90S/L2		24	WIMA202	WIMD202
		3 > 4	100L2-112M2	250	28	WIMA203	WIMD203
		5,5 > 7,5	132S2	300	38	WIMA204	WIMD204
		11 > 18,5	160M/L2	350	42	WIMA205	WIMD205
PZ (BG2)	20	1,5 > 2,2	90S/L2	200	24	WIMA301	WIMD301
		3 > 4	100L2-112M2	250	28	WIMA302	WIMD302
		5,5 > 7,5	132S2	300	38	WIMA303	WIMD303
		11 > 18,5	160M/L2	350	42	WIMA304	WIMD304
P / PS / PM (BG2)	32	3 > 4	100L2-112M2	250	28	WIMA401	WIMD401
		5,5 > 7,5	132S2	300	38	WIMA402	WIMD402
		11 > 18,5	160M/L2	350	42	WIMA403	WIMD403
		22	180M2		48	WIMA404	WIMD404
		30 > 37	200L2	400	55	WIMA405	WIMD405
PW (BG3)	40	11 > 18,5	160M/L2	350	42	WIMA501	WIMD501
		22	180M2		48	WIMA502	WIMD502
		30 > 37	200L2	400	55	WIMA503	WIMD503
		45	225M2	450	55	WIMA510	WIMD510
		55	250M2	550	60	WIMA511	WIMD511
		75 > 90	280S/M2		65	WIMA512	WIMD512